

The logo consists of the letters 'ucic' in a white, lowercase, sans-serif font, centered within a solid red square.

ucic



# ANTICHE TRAME

la suggestione del colore



Ambienti di prestigio con arredamento classico o moderno, esercizi pubblici di tendenza e molto frequentati, “rifugi” per un fine settimana di tranquillità: per le finiture decorative di tutti i vostri spazi, l’esperienza e il “**Made in Italy**” UCIC hanno creato **Antiche Trame**, la finitura perfetta per ogni vostra esigenza.

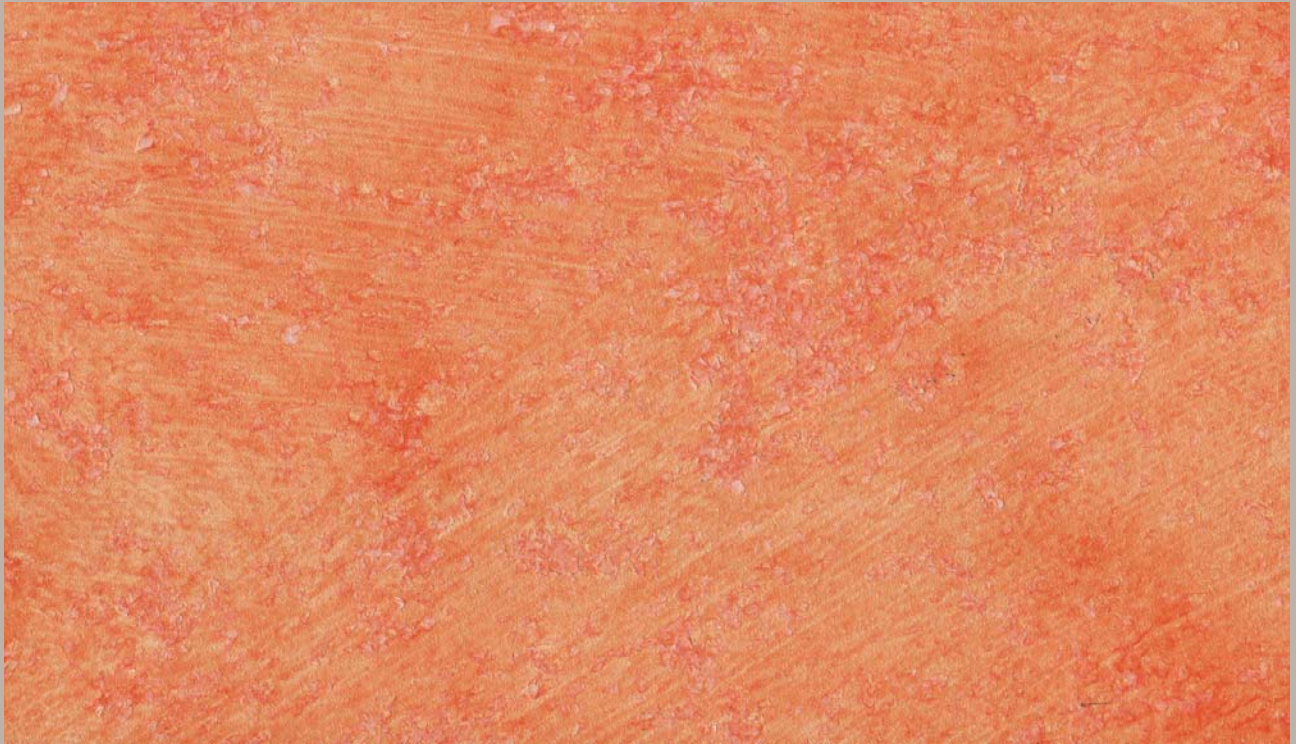
Rivestimento acrilico a base acquosa, nato dall’incontro di materie prime selezionate, Antiche Trame è facilmente applicabile e resistente. Inoltre, se desiderate ottenere effetti policromatici particolari e originali vi basterà mescolare (secondo le istruzioni riportate più avanti) Antiche Trame con **Cyberlux** o **Spectra**, i nostri fantastici colori acrilici. Per un elettrizzante risultato metallizzato scegliete Cyberlux, e se preferite un rilassante effetto perlato, Spectra è quello che fa per voi.



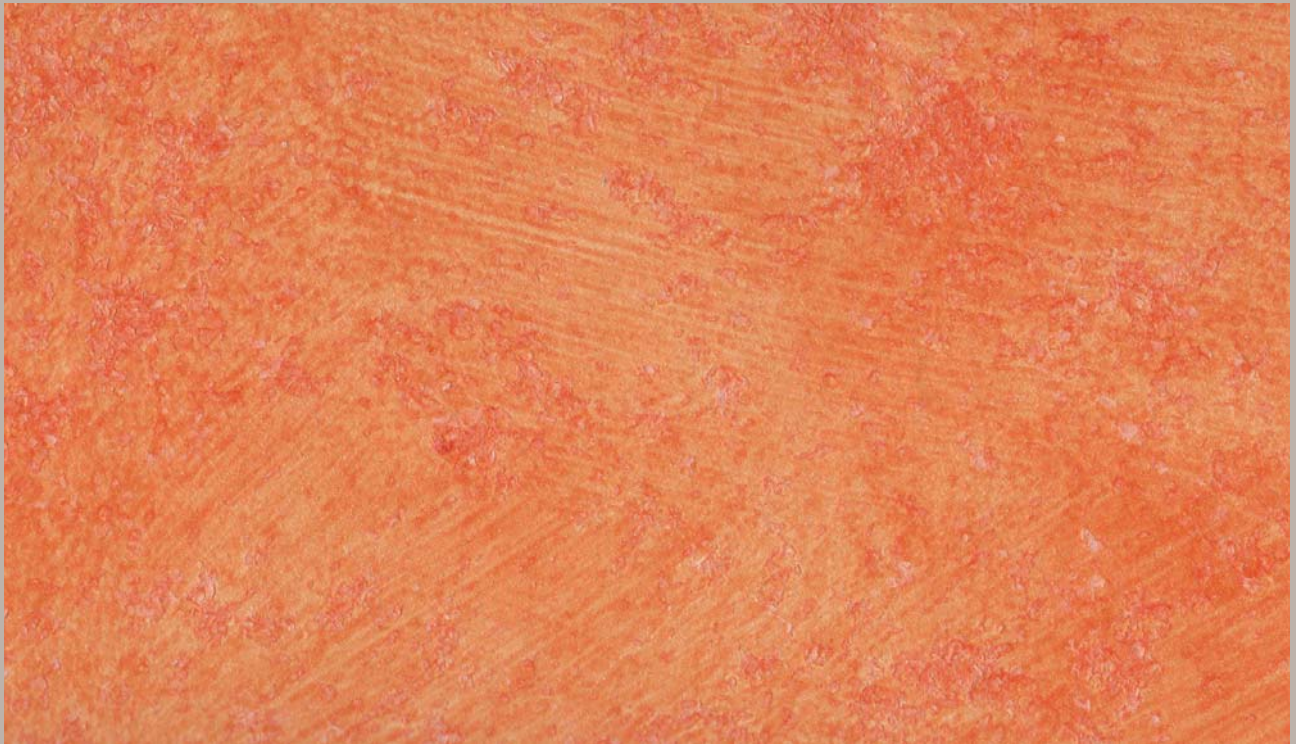


Classic or modern high tone environments, trendy and crowded business, “shelters” for a peaceful weekend: for the decorative finishes of all your rooms, the experience and “**Made in Italy**” by UCIC create **Antiche Trame**, the perfect product for every need. Acrylic, water-based coating, made up of selected raw materials, Antiche Trame is easy to apply and resistant. Besides, if you want to get particular and original polychromatic effects just mix (following the instructions below) Antiche Trame with **Cyberlux** or **Spectra**, our fantastic acrylic colours. For a thrilling metallic effect choose Cyberlux, and if you prefer a relaxing pearlescent effect, Spectra is your “must”.

# ANTICHE TRAME



25 • Antiche Trame



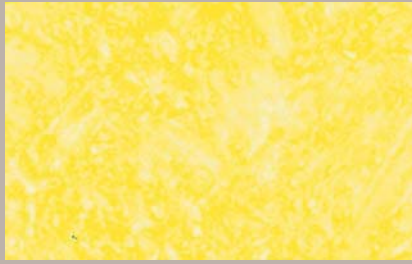
25 • Antiche Trame, lucidato con **Decorfinish** - *Antiche Trame, topcoated with **Decorfinish***

Gli esempi di tonalità mostrati in questa cartella sono stati ottenuti miscelando Antiche Trame (confezione da 2,5 litri) con Totocolor e Stabilcolor.

Tutte le tinte sono da considerarsi puramente indicative

*The color samples in this folder are obtained mixing Antiche Trame (2,5 lt packages) with Totocolor and Stabilcolor.*

*All the tints are to be considered as approximate*



9 • 15 ml T26



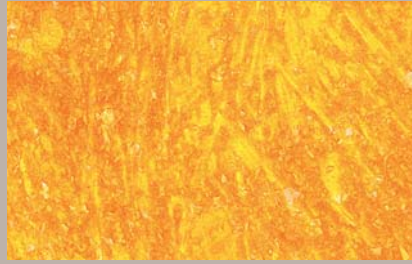
8 • 15 ml T34



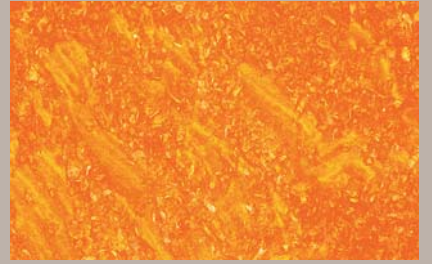
6 • 200 ml T25



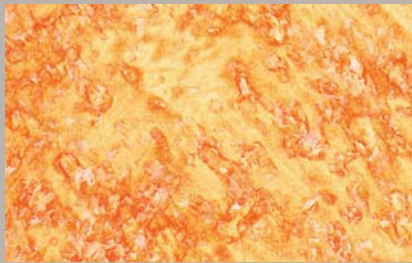
7 • 30 ml T34



3 • 200 ml T25 + 15 ml T27



1 • 200 ml T25 + 15 ml T28



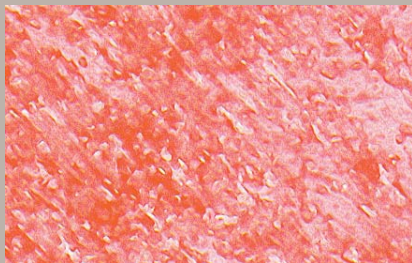
24 • 15 ml T27 + 15 ml T25



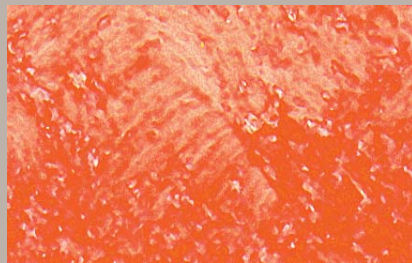
25 • 30 ml T27



21 • 50 ml T28 + 30 ml T25



35 • 15 ml T28



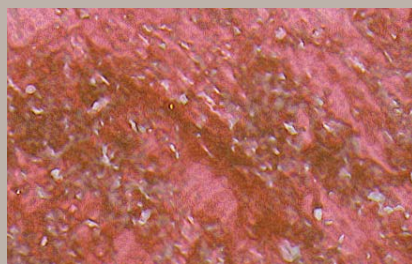
26 • 30 ml T28 + 15 ml T25



19 • 100 ml T28 + 50 ml T25



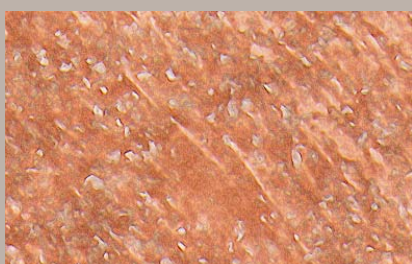
33 • 30 ml T28



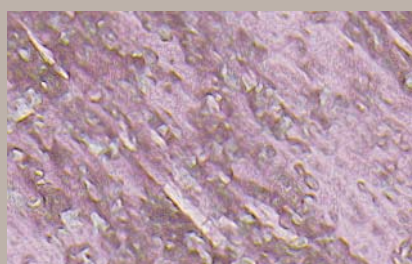
34 • 15 ml T29 + 30 ml T28



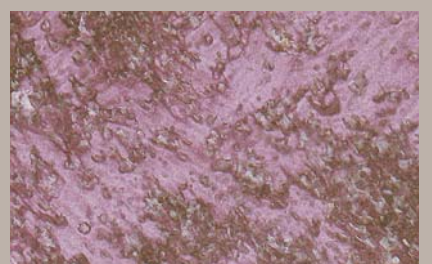
27 • 15 ml T22 + 15 ml T28



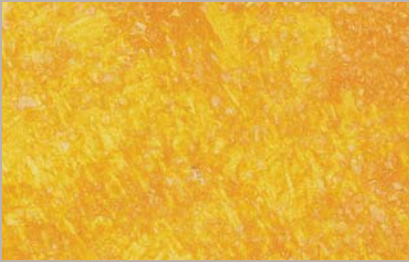
36 • 15 ml T22



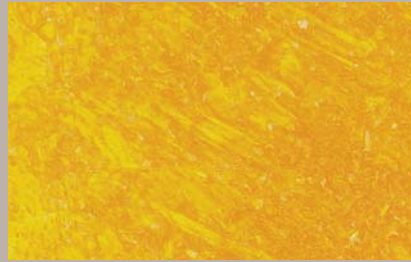
31 • 15 ml T29



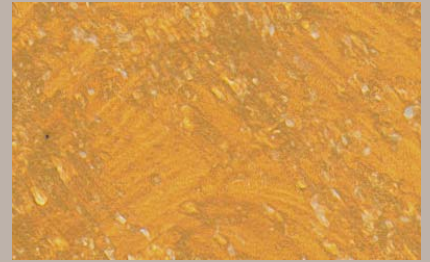
32 • 30 ml T29



5 • 50 ml T25 + 15 ml T21



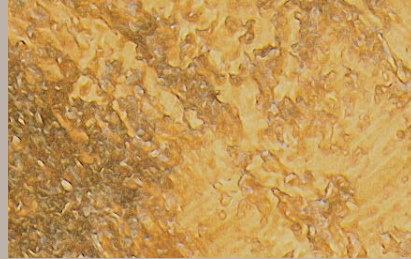
4 • 200 ml T25 + 15 ml T21



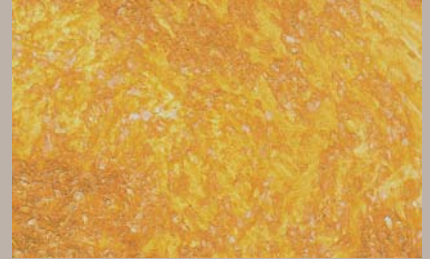
12 • 150 ml ST1



17 • 15 ml T21



11 • 15 ml T34 + 15 ml T23



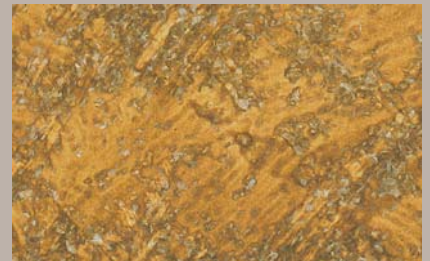
2 • 50 ml S1



18 • 30 ml T21



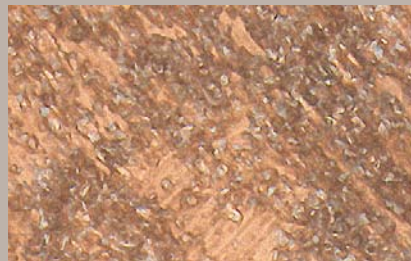
14 • 30 ml T21 + 15 ml T25



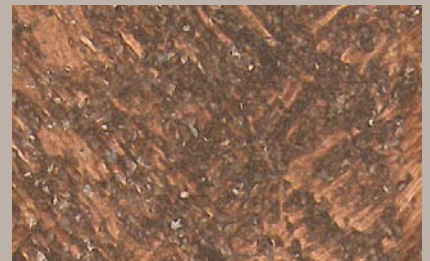
13 • 50 ml T23 + 50 ml T26



15 • 15 ml T23



16 • 30 ml T23



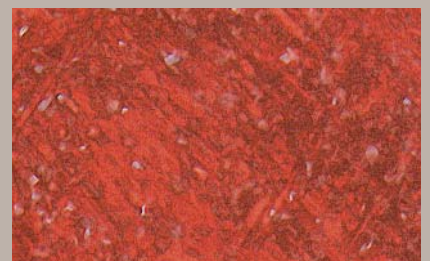
10 • 50 ml ST3



22 • 15 ml T22 + 30 ml T25 + 15 ml T28



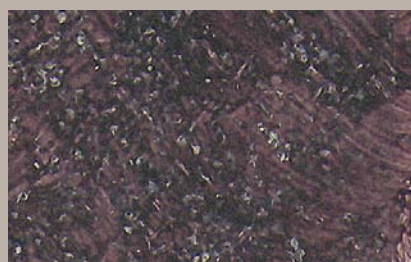
23 • 50 ml S2 + 200 ml T25



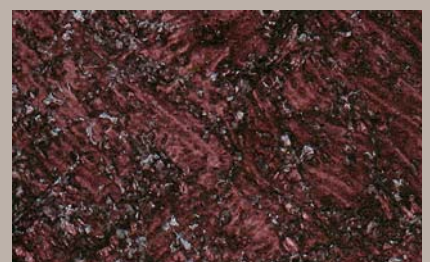
20 • 50 ml S2



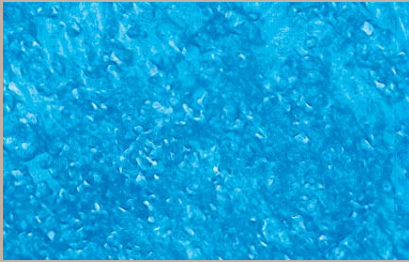
28 • 15 ml T24



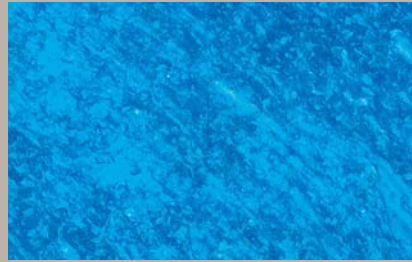
29 • 45 ml T29 + 15 ml T24



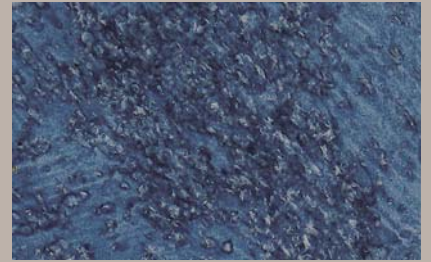
30 • 80 ml T28 + 15 ml T24



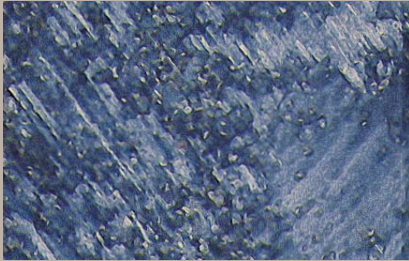
44 • 15 ml T30



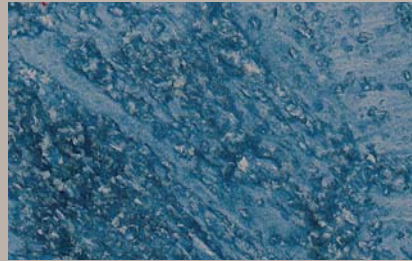
45 • 30 ml T30



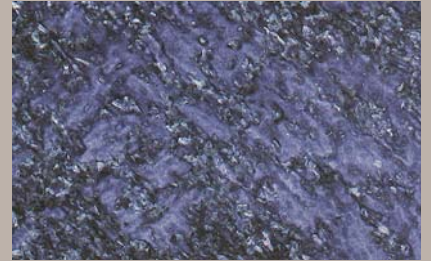
41 • 30 ml T29 + 30 ml T30



42 • 15 ml T30 + 15 ml T28



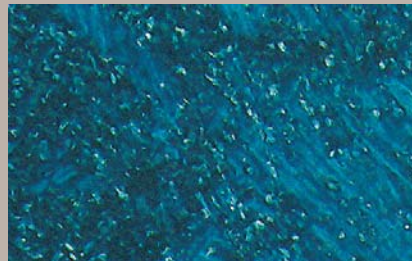
40 • 15 ml T29 + 15 ml T30



39 • 45 ml T29 + 15 ml T30



38 • 15 ml T30 + 15 ml T22



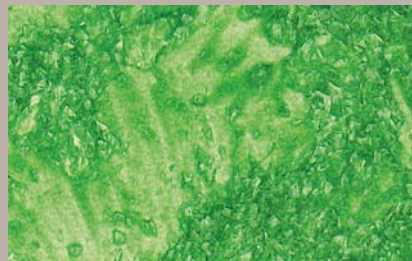
43 • 100 ml T30 + 50 ml S5



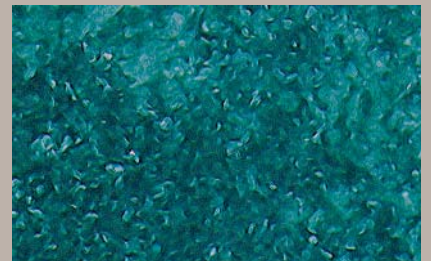
37 • 50 ml T30 + 15 ml T24



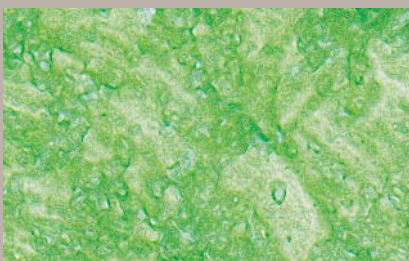
51 • 15 ml T32



52 • 30 ml T32



46 • 50 ml S5



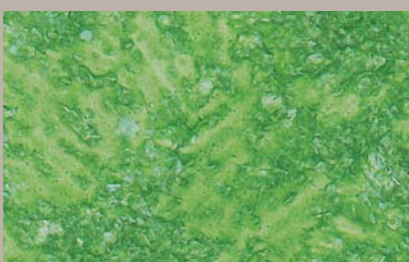
53 • 15 ml T31



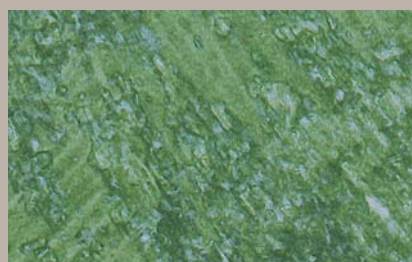
49 • 100 ml T26 + 15 ml T31



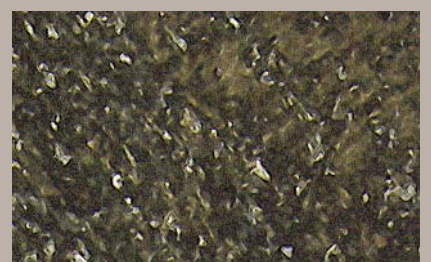
50 • 30 ml T32 + 150 ml T26



54 • 30 ml T31



48 • 50 ml S6



47 • 50 ml S6 + 15 ml T24